

THE BRIDGE TO EMPLOYMENT OUR JOURNEY



AIM

- ▶ To develop and deliver a range of opportunities for children and young people with ASD and related disabilities as well as their families, carers and practitioners who support them.



PARTNERSHIPS

Working in conjunction with:

- ▶ Multi-Agency D & G Autism Strategy Group
- ▶ D & G Autism Network
- ▶ D & G Council Employability Service
- ▶ DG Tap
- ▶ Project Search
- ▶ Leonard Cheshire – ‘Can Do’ Project
- ▶ Compass
- ▶ D & G Council Social Work Services – Personalised Approaches



SEPTEMBER 2017 – B2E IS BORN

- ▶ Our flagship project
- ▶ Aims to give young people with ASD a structured programme of person-centered accredited training in their area of interest and expertise, work-related skills and to prepare them for the next step towards employment, self-employment, education, training or volunteering



WHAT MAKES US DIFFERENT?

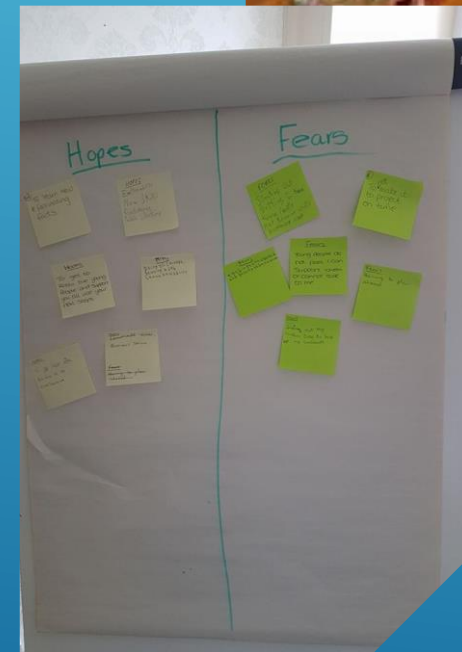
The B2E Programme offers our young people 3 inter-linked strands. These delivered together in a person centered way give the young people the best opportunity for transition:-

- ▶ Employability
- ▶ Work Experience
- ▶ Enterprise



WHAT WE OFFER ON B2E

- ▶ The young people on B2E programme follow a certificated employability and life skills programme of study leading to nationally recognised qualifications – SQA, ASDAN and John Muir Awards.
- ▶ B2E is unique because unlike other programmes it starts with the young people and builds on their existing skills and attributes rather than focusing on a career area.



WHAT WE OFFER ON B2E

- ▶ Pilot project in Stewartry BLP aim to grow project into locality models to provide similar opportunities in Wigtownshire, Upper Nithsdale and Annandale
- ▶ Started with 5 young people and now have 16 attending regularly – full time, part time and a few as part of an alternative school timetable.
- ▶ Many of 1st cohort have returned in August, part-time, to combine their work experience with time on the Programme



OUR TIMETABLE

DATE: December 2018

	Monday	Tuesday	Wednesday	Thursday
10:00 – 11:00	FOODWISE	Employability Award **Print Shop**	Independent Tasks/ Visits	ENTERPRISE **Print Shop**
11:00 – 11:15	Break	Break	Break	Break
11:15 – 12:15	BLP Employability Independent Living	Employability Award **Print Shop**	Independent Tasks/ Visits	ENTERPRISE **Print Shop**
12:15 – 13:15	Lunch	Lunch	Lunch	Lunch Once a month: TLC café £3 each
13:15 – 14:15	BLP Employability Independent Living	Creative	ENTERPRISE	Evaluation of the week/ social games **Print Shop**

PARTNERSHIP WORKING

- ▶ With Project Search to offer a 4 week get ready for Project Search course for 2 of their recruits. Combines a day working on social skills, communication and independent travel with a day on our Summer visit programme meeting our young people.
- ▶ With DG Employability to enable a 'joined-up' approach to supporting young people achieve a positive destination.
- ▶ With DG Social Work Personalised Approaches to ensure young people can access all opportunities open to them
- ▶ With Social Work to ensure the teams know of our programme and how to refer to B2E
- ▶ With Leonard Cheshire offering the Can-Do Environmental Programme where our young people were awarded John Muir awards for their achievements.



VOLUNTARY WORK EXPERIENCE PLACEMENT

- ▶ When starting on a work placement our staff continue to support the young person and the employer to ensure the placement results in a positive destination for the young person.
- ▶ 1 has secured a Modern Apprenticeship, 5 others on variety of voluntary work experience placements, 1 starting University, 1 has just returned to College whilst still attending his work placement and B2E for mentorship



EDUCATING EMPLOYERS

- ▶ Focus on educating employers in 'What is Autism' and how it may impact in their workplace.
- ▶ Explain simple modifications to make it easier for a person with ASD fit into the workplace and make a valuable contribution to the success of the business.
- ▶ Acknowledging every person with ASD is different – giving employers an overview but also the specific knowledge they will need to support the individual.





ENTERPRISE EVENTS 2017-18

- ▶ Christmas Fayres – Castle Douglas High School & Haugh of Urr Village Hall
- ▶ Lego and Craft Fair – Castle Douglas Town Hall
- ▶ Christmas Fayre – Kirkcudbright Academy (2018)
- ▶ Castle Douglas Co-op – Buddy Shopper Scheme with Sales Table

SUMMER PROGRAMME

- ▶ For young people on work experience placements this continues through the summer period.
- ▶ Deliver a programme of 4 visits for our young people in July. We had 3 visits – Threave Gardens, Gracefield Arts Centre and Red Kite Feeding Station and a fun day at Cotton Street with a Party lunch and the launch of the new timetable for Year 2.





The Better Lives Partnership

AN AFTER SCHOOL LEGO CLUB

For Primary 3 - Primary 7 aged children with
ASD and/or additional barriers

Running 4.00pm - 5.00pm every Thursday

from the 1st November to the 29th November

@ Better Lives Partnership, 43 Cotton Street,
Castle Douglas

Why don't you bring your small person along and enjoy a cup of tea, chat, or go shopping while they practise taking turns, listening to others and working together with other children through building Lego

If your child would like to come along to Lego Club, email kclark@betterlivespartnership.org.uk and leave your name, address and contact number or email



NEW: LEGO CLUB

During November our Lego Club for children in Primary 3 – 7 will start as a pilot.

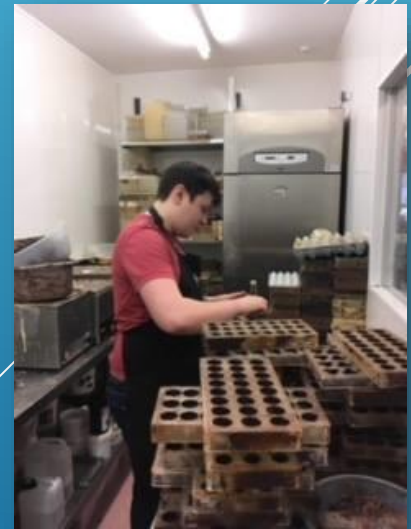
WHAT'S NEXT.....?

- ▶ B2E is a SUCCESS – we hope to roll a locality model out to Annan where we know there is a demand
- ▶ Scoping exercise in Annan generated support from schools, D & G Council, Employability sector and the community.
- ▶ Would like to offer a model in Annan over 3 days a week offering 12 places to young people.
- ▶ Next steps – a locality model in Wigtonshire.



IMPACT FOR YOUNG PEOPLE

- ▶ Greatest impact is on a **SOCIAL LEVEL**.
- ▶ Enables young people to take a more pro-active role in their communities.
- ▶ Develop independence – enabling young people to develop employability skills and find employment strengthens family cohesion and confidence.
- ▶ Reduce stigma and raise awareness of the potential of young people with ASD.
- ▶ Young people become more economically independent as a result of B2E.
- ▶ Young people contribute to the economic development within region.





► Our Young People – class of 2017/2018

SEPTEMBER 2017 –
B2E IS BORN



CW.....





LAURIESTON GALLERY





VISITS

Devil's Porridge
Museum





CW –
an expert on military
helmets



VISITS

Threave Castle with
the 'Can Do'
project

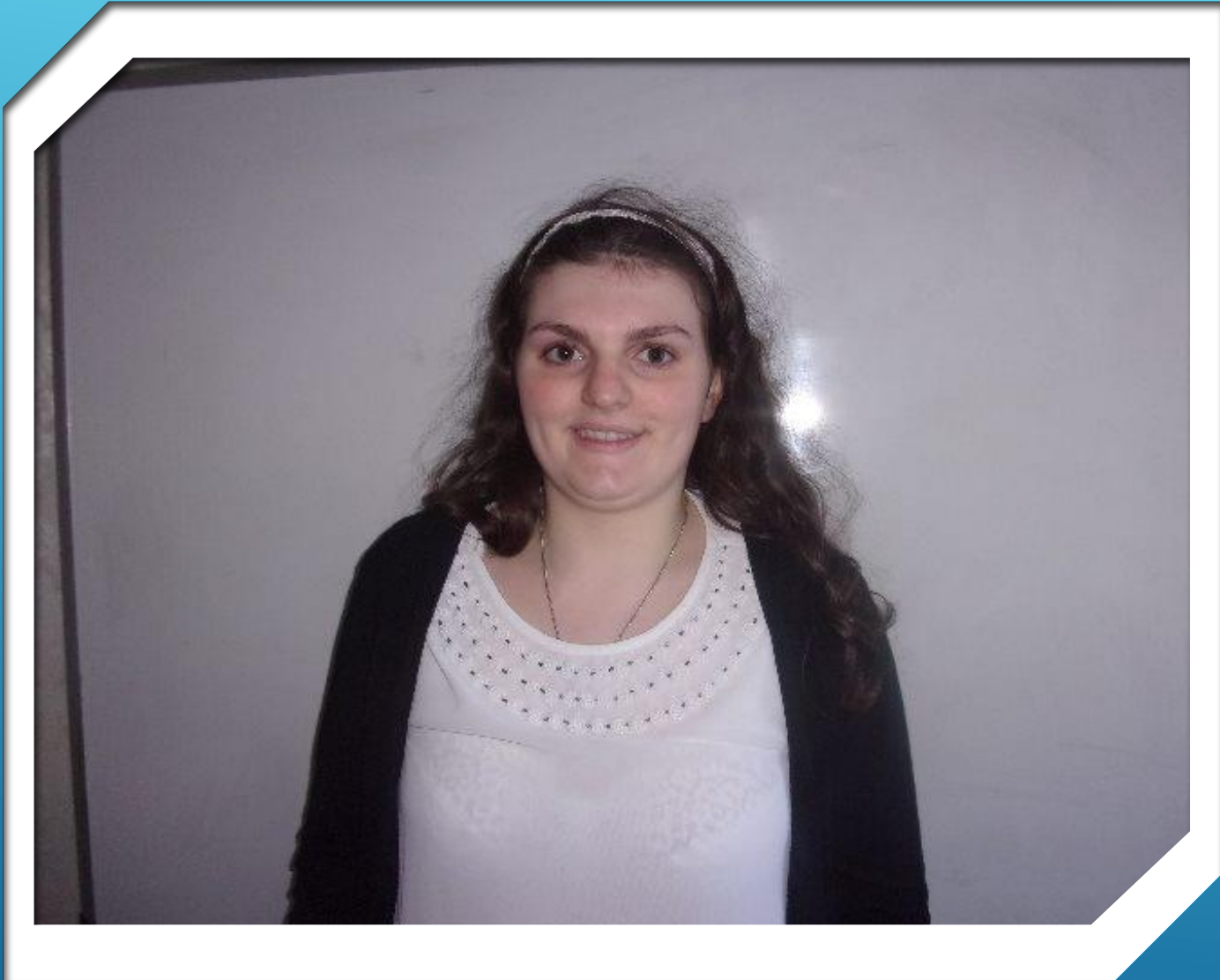




VISITS

Threave Castle





KW





BAG PACKING

Tesco, Castle
Douglas





SOCIALISING – BBQ FOR THE BOARD





THREAVE CASTLE VISIT

On the boat.....





HM – GOOD
LUCK AT
UNIVERSITY

...



HM – UPDATE



- ▶ Hannah is staying in a flat in the halls in Edinburgh.
- ▶ She is happy and has joined a couple of clubs – film club and the languages club
- ▶ She has made some friends
- ▶ She is enjoying her University Course

- ▶ Mum says ‘Thank you for all the help you gave her at Better Lives’



CA - WORK EXPERIENCE: IN HOUSE CHOCOLATES



CA – MODERN APPRENTICESHIP AT THE SELKIRK ARMS HOTEL, KIRKCUDBRIGHT

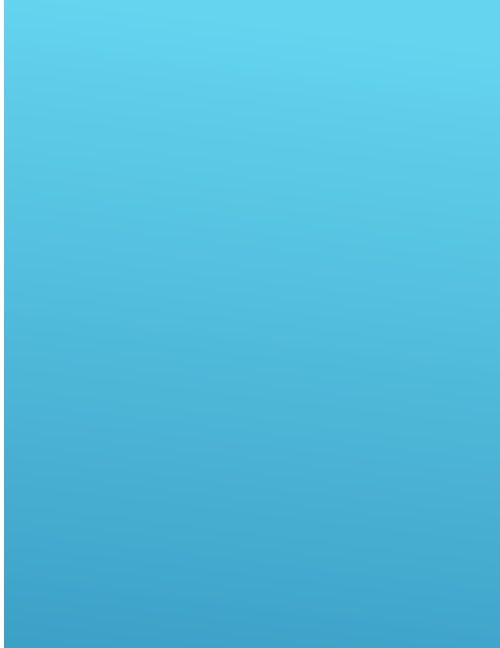
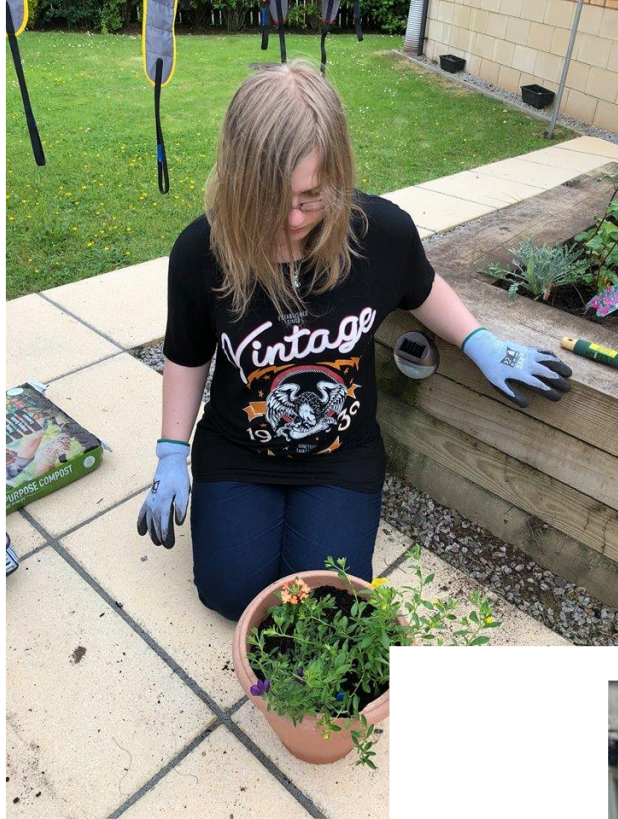
Met with CA he says he is

- happier now he is working,
- enjoying learning different kitchen skills
- Feeling confident and happy to be supported throughout his experience

“If it wasn't for BLP I'd still be moping around the house”



SM – OUR
LEMONADE
MAN.....
COMING TO
A MARKET
NEAR YOU.....



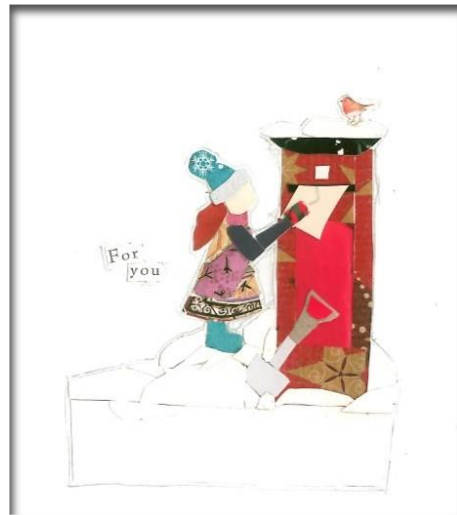
AMCC – WELCOME TO B2E





AMCC –

An artist and illustrator in
the making





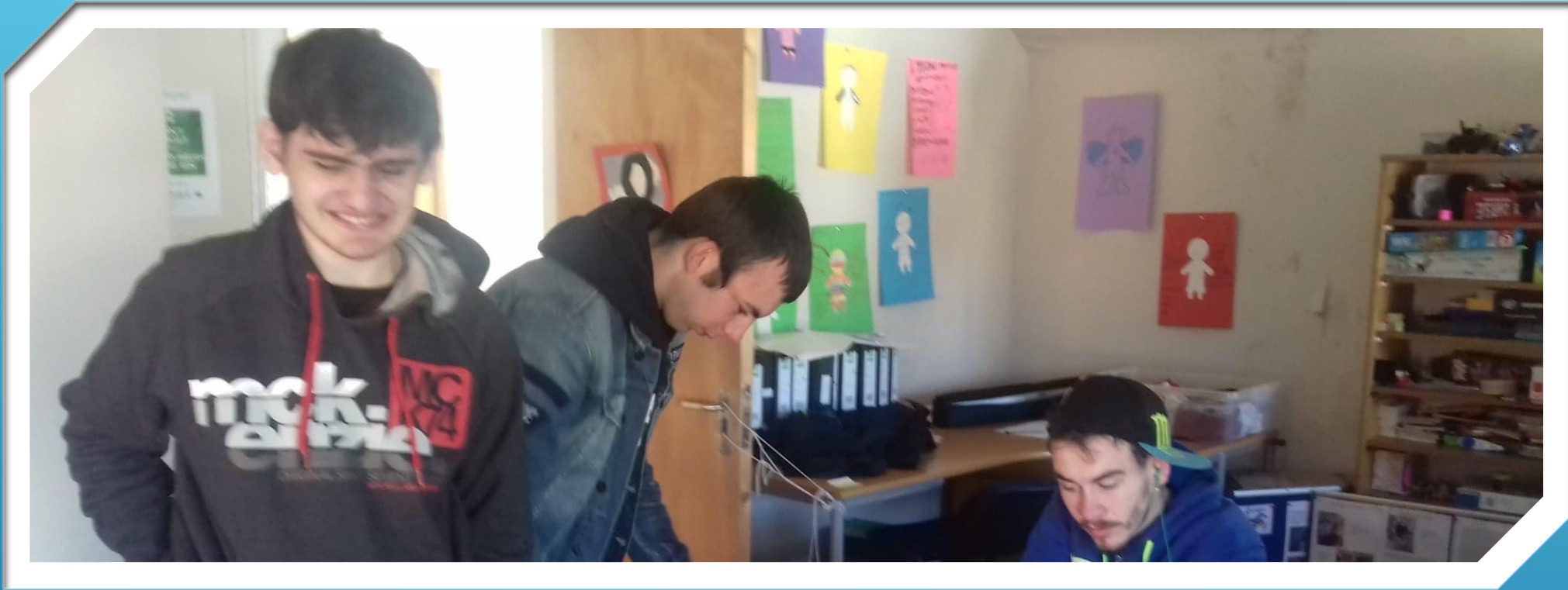


JC – WELCOME
TO B2E



JC – WORK EXPERIENCE AT THREAVE GARDENS, CASTLE DOUGLAS

- ▶ 2 weeks ago JC started working with the environmental guys at NTS Threave Gardens.
- ▶ He has helped to rebuild the Osprey Nest
- ▶ He has helped to make a path
- ▶ JC is in his element.....



CMCM – WELCOME TO B2E



CMCM –
WORK
EXPERIENCE –
PALMERSTON
CAR WASH,
DUMFRIES



- ▶ Enjoys music, sports and writing.
- ▶ Looking for a work placement in his area of expertise

CB – JOINED B2E IN
SEPTEMBER

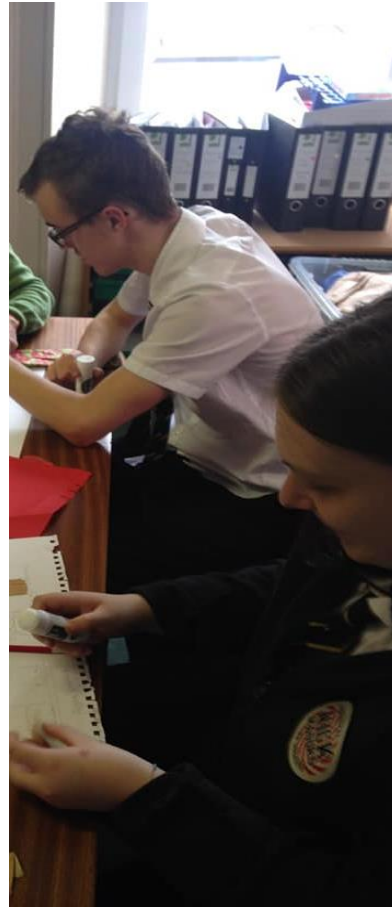


LH – JOINED B2E IN SEPTEMBER

- Looking for a work placement in retail or café

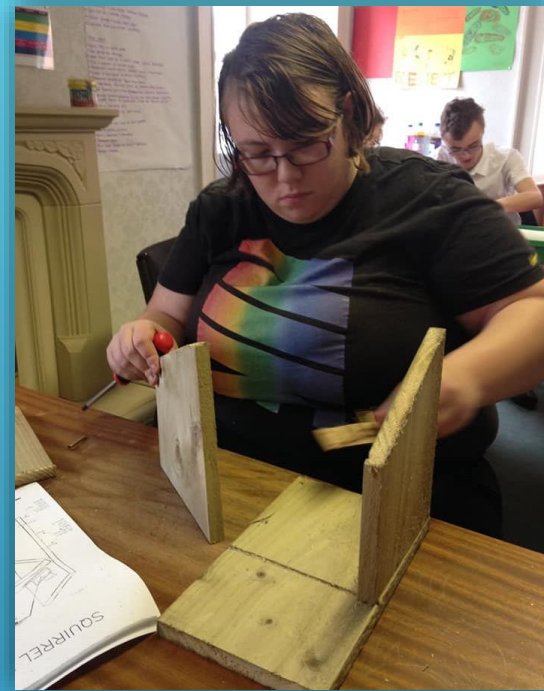
SCHOOLS

- We have 4 young people attend B2E as part of an alternative timetable from 2 of our local Secondary Schools.
- This makes for a smoother transition in 2019 when they move on from school to start their 'next steps' journey with B2E



KG





Some of the things I've done during my year at B2E

JB





Some of the things I've done during my year at B2E



OUR WONDERFUL KELLY WITH KATH AND KRISTIN WHO WORK WITH THE YOUNG PEOPLE



OUR SUCCESS STORY – VOSCARS 2018

A proud moment on Monday 4th June 2018
Almost one year into the Programme BLP is awarded
the Locality Prize for a Group working with Children
and Young People at the Volunteer Week VOSCARS
Ceremony organised by Third Sector D & G



VOSCAR'S REGIONAL WINNERS 2018 CATEGORY – GROUP OR ORGANISATION WORKING WITH CHILDREN AND YOUNG PEOPLE.



Another accolade for B2E

SPECIAL COMMENDATION IN THE VOLUNTARY/COMMUNITY GROUP CATEGORY OF THE DUMFRIES & GALLOWAY LIFE AWARDS.

GRATEFUL THANKS TO OUR FUNDERS.....

